



TECHNICAL MANUAL

ORGANIZATIONAL, DIRECT SUPPORT, AND GENERAL SUPPORT MAINTENANCE
REPAIR PARTS AND SPECIAL TOOLS LISTS
(INCLUDING DEPOT MAINTENANCE REPAIR PARTS AND SPECIAL TOOLS)
FOR

POWER SUPPLY PP-4606B/G
(NSN 6130-00-504-0327)

TECHNICAL MANUAL
No. 11-6130-243-24P-2

HEADQUARTERS
DEPARTMENT OF THE ARMY
WASHINGTON, DC, 12 December 1977

**ORGANIZATION, DIRECT SUPPORT, AND GENERAL SUPPORT MAINTENANCE
REPAIR PARTS AND SPECIAL TOOLS LISTS
(INCLUDING DEPOT MAINTENANCE REPAIR PARTS AND SPECIAL TOOLS)
FOR
POWER SUPPLY PP-4606B/G
(NSN 6130-00-504-0327)**

Current as of 8 August 1977

REPORTING OF ERRORS

You can improve this manual by recommending improvements using DA Form 2028-2 (Test) located in the back of the manual. Simply tear out the self-addressed form, fill it out as shown on the sample, fold it where shown, and drop it in the mail.

If there are no blank DA Form 2028-2 (Test) in the back of your manual, use the standard DA Form 2028 (Recommended Changes to Publications and Blank Forms) and forward to the Commander, US Army Electronics Command, ATTN: DRSEL-MA-Q, Fort Monmouth, NJ 07703.

In either case a reply will be furnished direct to you.

*This manual supersedes so much of TM 11-6130-243-14-2, 2 April 1973, as pertains to repair parts and special tools list.

Table of Contents

SECTION		Page	Illus Figure
	I. Introduction	1	
	II. Repair parts list	5	
Group	00 Reader, Punched Tape AN/USA-34 (No parts authorized)		
	01 Reader, Punched Tape RP-186/U (No parts authorized)		
	0109 Panel Assembly	5	1
	02 Case, Punched Tape Tape Reader CY-7026/ USA-34 (No parts authorized)		
	0201 Cable Assembly, Signal	7	2
	0202 Cable Assembly, Power	9	3
	03 Cable Assembly, Special Purpose, Elec- trical CX-12590/USA-34 (No parts authorized)		
	III. Special tools list (Not applicable)		
	IV. National stock number and part number index	10	

SECTION I INTRODUCTION

1. Scope

This manual lists spares and repair parts; special tools; special test, measurement, and diagnostic equipment (TMDE), and other special support equipment required for performance of organizational, direct support, and general support maintenance of the PP-4606B/G. It authorizes the requisitioning and issue of spares and repair parts as indicated by the source and maintenance codes.

2. General

This Repair Parts and Special Tools List is divided into the following sections:

a. Section II. Repair Parts List. A list of spares and repair parts authorized for use in the performance of maintenance. The list also includes parts which must be removed for replacement of the authorized parts. Parts lists are composed of functional groups in numeric sequence, with the parts in each group listed in figure and item number sequence.

b. Section III. Special Tools List. Not applicable.

c. Section IV. National Stock Number and Part Number Index. A list, in National item identification number (NIIN) sequence, of all National stock numbers (NSN) appearing in the listings, followed by a list, in alphameric sequence, of all part numbers appearing in the listings. National stock numbers and part numbers are cross-referenced to each illustration figure and item number appearance.

3. Explanation of Columns

a. Illustration. This column is divided as follows:

(1) *Figure number.* Indicates the figure number of the illustration on which the item is shown.

(2) *Item number.* The number used to identify item called out in the illustration.

b. Source, Maintenance, and Recoverability (SMR) Codes.

(1) *Source code.* Source codes indicate the manner of acquiring support items for maintenance, repair, or overhaul of end items. Source codes are entered in the first and second positions of the Uniform SMR Code format as follows:

<i>Code</i>	<i>Definition</i>
PA	item procured and stocked for anticipated or known usage.
XD	A support item that is not stocked. When required, item will be procured through normal supply channels.

NOTE

Cannibalization or salvage may be used as a source of supply for any items source coded above except those coded XA and aircraft support items as restricted by AR 700-42.

(2) *Maintenance code.* Maintenance codes are assigned to indicate the levels of maintenance authorized to USE and REPAIR support items. The maintenance codes are entered in the third and fourth positions of the Uniform SMR Code format as follows:

(a) The maintenance code entered in the third position will indicate the lowest maintenance level authorized to remove, replace, and use the support item. The maintenance code entered in the third position will indicate one of the following levels of maintenance:

<i>Code</i>	<i>Application/Explanation</i>
O	Support item is removed, replaced, used at the organizational level.
H	Support item is removed, replaced, used at the general support level.

(b) The maintenance code entered in the fourth position indicates whether the item is to be repaired and identifies the lowest maintenance level with the capability to perform complete repair (i.e., all authorized maintenance functions). This position will contain one of the following maintenance codes:

<i>Code</i>	<i>Application/Explanation</i>
H	The lowest maintenance level capable of complete repair of the support item is the general support level.
Z	Nonreparable. No repair is authorized.

(3) *Recoverability code.* Recoverability codes are assigned to support items to indicate the disposition action on unserviceable items. The recoverability code is entered in the fifth position of the Uniform SMR Code format as follows:

<i>Recoverability codes</i>	<i>Definition</i>
Z	Nonreparable item. When unserviceable, condemn and dispose at the level indicated in position 3.
H	Reparable item. When uneconomically repairable, condemn and dispose at the general support level.
D	Reparable item, When beyond lower level repair capability, return to depot. Condemnation and disposal not authorized below depot level.

c. *National Stock Number.* Indicates the National stock number assigned to the item and will be used for requisitioning purposes.

d. *Part Number.* Indicates the primary number used by the manufacturer (individual, company, firm, corporation, or Government activity), which control the design and characteristics of the item by means of its engineering drawings, specifications, standards, and inspection requirements to identify an item or range of items.

NOTE

When a stock numbered item is requisitioned, the repair part received may have a different part number than the part being replaced.

e. *Federal Supply Code for Manufacturer (FSCM).* The FSCM is a 5-digit numeric code listed in SB 708-42 which is used to identify the manufacturer, distributor, or Government agency. etc.

f. *Description.* Indicates the Federal item name and, if required, a minimum description to identify the item.

g. *Unit of Measure (U/M).* Indicates the standard of the basic quantity of the listed item as used in performing the actual maintenance function. This measure is expressed by a two-character alphabetical abbreviation (e.g., ea, in, pr, etc). When the unit of measure differs from the unit of issue, the lowest unit of issue that will satisfy the required units of measure will be requisitioned.

h. *Quantity Incorporated in Unit.* Indicates the quantity of the item used in the breakout shown on the illustration figure, which is prepared for a functional group, subfunctional group, or an assembly.

4. Special Information

The following publication pertains to the PP-4606B/G and its components:

TM 11-6130-243-14-2, Power Supply PP-4606B/G

5. How to Locate Repair Parts

a. When National stock number or part number is unknown.

(1) *First.* Using the table of contents, determine the functional group within which the item belongs. This is necessary since illustrations are prepared for functional groups and listings are divided into the same groups.

(2) *Second.* Find the illustration covering the functional group to which the item belongs.

(3) *Third.* Identify the item on the illustration and note the illustration figure and item number of the item.

(4) *Fourth.* Using the Repair Parts Listing, find the figure and item number noted on the illustration.

b. When National stock number or, part number is known.

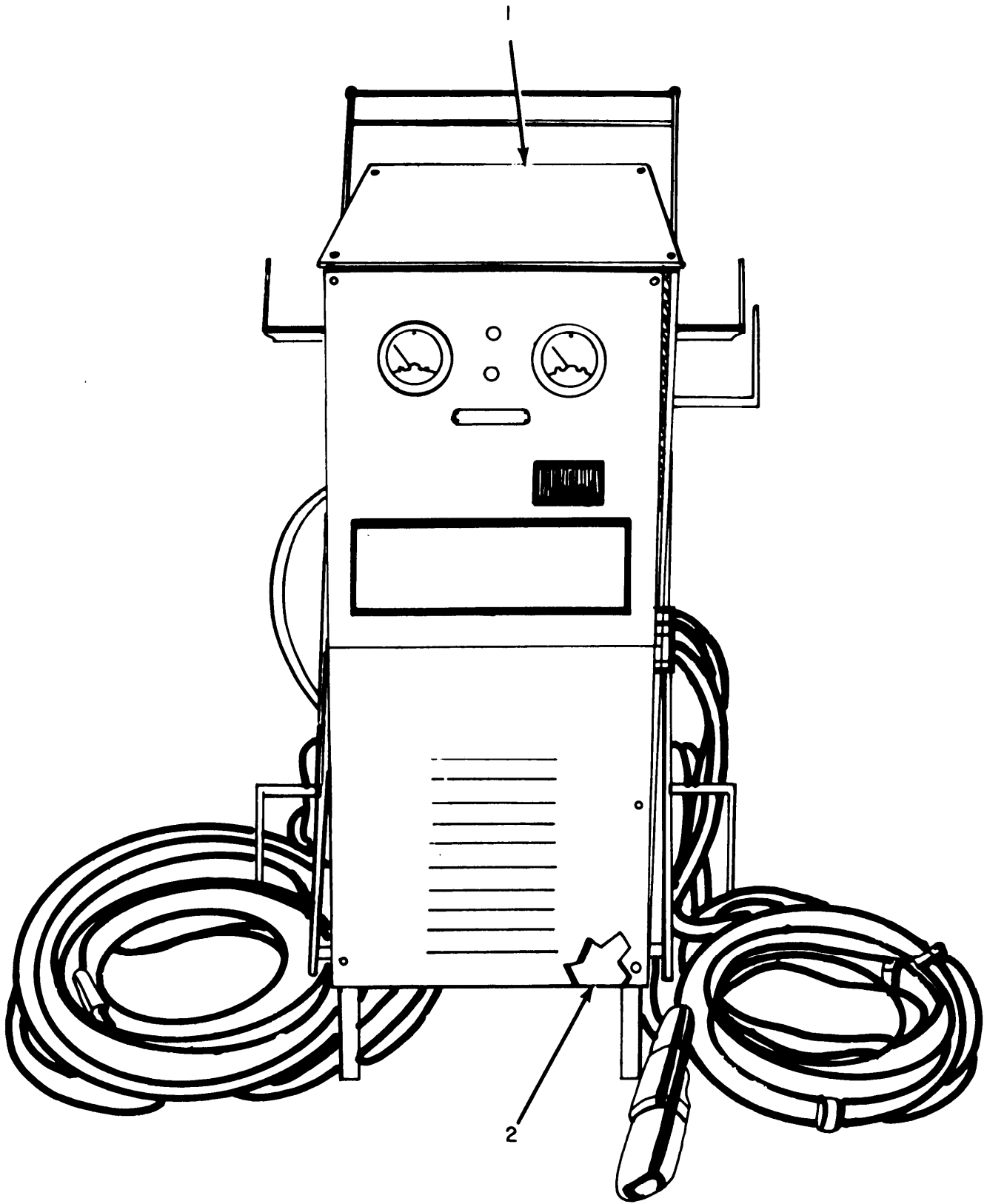
(1) *First.* Using the Index of National Stock Numbers and Part Numbers, find the pertinent National stock number or part number. This index is in NIIN sequence followed by a list of part numbers in alphabetic sequence, cross-referenced to the illustration figure number and item number.

(2) *Second.* After finding the figure and item number, locate the figure and item number in the repair parts list.

6. Abbreviations

Not applicable.

(Next printed page is 4.)



EL3ZF001

Figure 1. Power Supply PP-4606B/G.

SECTION II

(1)	(2)	(3)	(4)	(5)	(6)	(7)	(8)
ILLUSTRATION		NATIONAL	PART	DESCRIPTION		QTY	
FIG	ITEM	SMR	STOCK	NUMBER	FSCM	USABLE ON CODE	U/M UNIT
NO.	NO.	CODE	NUMBER				
GROUP 00 POWER SUPPLY PP-4606B/G							
1	1	XDHHD	91148	10621	HOUSING ASSEMBLY	EA	1
1	2	XDHHD	91202	10621	BASE ASSEMBLY	EA	1

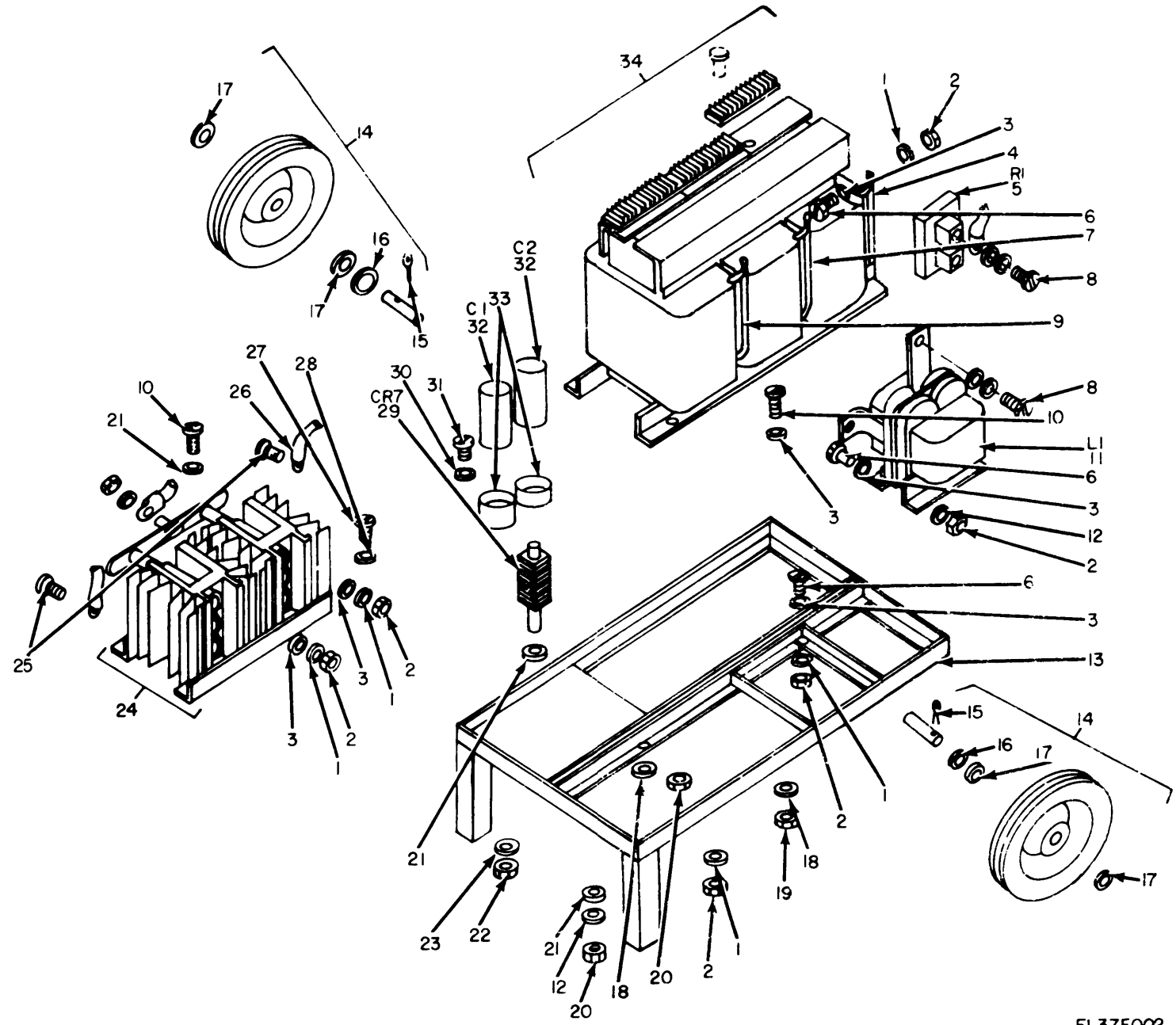


Figure 2. Power Supply PP-4606B/G, Base Assembly.

EL3ZF002

SECTION II

(1)	(2)	(3)	(4)	(5)	(6)	(7)	(8)
ILLUSTRATION							
(A)	(B)	NATIONAL	PART		DESCRIPTION		QTY
FIG	ITEM	STOCK	NUMBER	FSCM		USABLE ON CODE	INC
NO.	NO.	NUMBER	NUMBER				IN
							UNIT
2	1	PAHZZ 5310-00-209-0965	MS35333-40	96906	WASHER, LOCK		EA 5
2	2	PAHZZ 5310-00-997-1888	MS35649-2252	96906	NUT, PLAIN, HEXAGON		EA 6
2	3	PAHZZ 5310-00-809-4058	MS27183-10	96906	WASHER, FLAT		EA 6
2	4	XDHZZ	91146-3	10621	LEAD, ELECTRICAL		EA 1
2	5	PAHZZ 6625-00-166-1005	MS91587-4	96906	SHUT, INSTRUMENT		EA 1
2	6	PAHZZ 5305-00-988-1725	MS35206-281	96906	SCREW, MACHINE		EA 4
2	7	XDHZZ	91146-2	10621	LEAD, ELECTRICAL		EA 1
2	8	PAHZZ 5305-00-269-3209	MS90725	96906	SCREW, MACHINE		EA 2
2	9	XDHZZ	91146-1	10621	LEAD, ELECTRICAL		EA 1
2	10	PAHZZ 5305-00-988-1724	MS35206-280	96906	SCREW, MACHINE		EA 4
2	11	PAHZZ 5950-00-004-7722	91147	10621	REACTOR		EA 1
2	12	PAHZZ 5310-00-576-5752	MS35333-39	96906	WASHER, LOCK		EA 1
2	13	XDHZZ	91149	10621	BASE		EA 1
2	14	XDHZZ	91195	10621	WHEEL ASSEMBLY		EA 2
2	15	XDHZZ	AN381-3-16	88044	PIN, COTTER		EA 2
2	16	XDHZZ	91196	10621	SPACER, SLEEVE		EA 2
2	17	PAHZZ 5310-00-809-8536	MS27183-24	96906	WASHER, FLAT		EA 4
2	18	PAHZZ 5310-00-559-0070	MS35333-38	96906	WASHER, LOCK		EA 2
2	19	PAHZZ 5310-00-934-9757	MS35649-282	96906	NUT, PLAIN, HEXAGON		EA 2
2	20	PAHZZ 5310-00-934-9758	MS35649-202	969006	NUT, PLAIN, HEXAGON		EA 2
2	21	PAHZZ 5310-00-014-5850	MS27183-42	96906	WASHER, FLAT		EA 3
2	22	PAHZZ 5310-00-934-9747	MS35649-262	96906	NUT, PLAIN, HEXAGON		EA 3
2	23	PAHZZ 5310-00-579-0079	MS35333-37	96906	WASHER, LOCK		EA 3
2	14	PAHHH 6130-00-181-8794	91157	10621	RECTIFIER ASSEMBLY		EA 1
2	25	PAHZZ 5305-00-984-6195	MS35206-246	96906	SCREW, MACHINE		EA 2
2	26	XDHZZ	91153	10621	LEAD, ELECTRICAL		EA 1
2	27	PAHZZ 5305-00-988-1725	MS35206-281	96906	SCREW, MACHINE		EA 1
2	28	PAHZZ 5310-00-765-3197	MS27183-41	96906	WASHER, FLAT		EA 2
2	29	XDHZZ	S01CAC6EC	5277	RECTIFIER, SEMICOND DVC		EA 1
2	30	PAHZZ 5310-00-082-1404	MS27183-6	96906	WASHER, FLAT		EA 3
2	31	PAHZZ 5305-00-984-4984	MS35223-27	96906	SCREW, MACHINE		EA 2
2	32	XDHZZ	CE71C40CB14	81349	CAPACITOR, FXD, ELCTLC		EA 2
2	33	XDHZZ	FCMR	99392	CLALMP, CAPACITOR		EA 2
2	34	PAHHH 5950-00-040-8077	91145	10621	ASSEMBLY, XFMR, PWR		EA 1

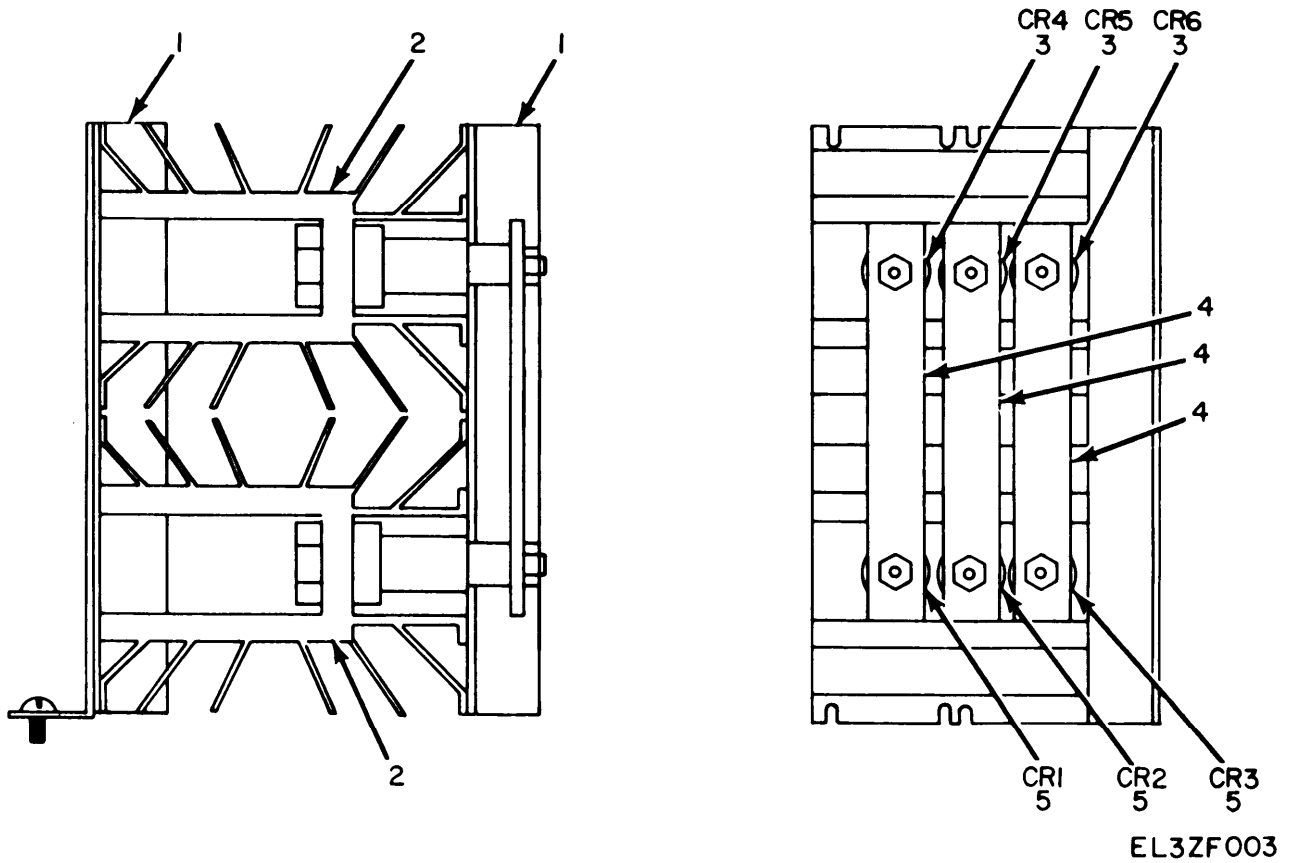
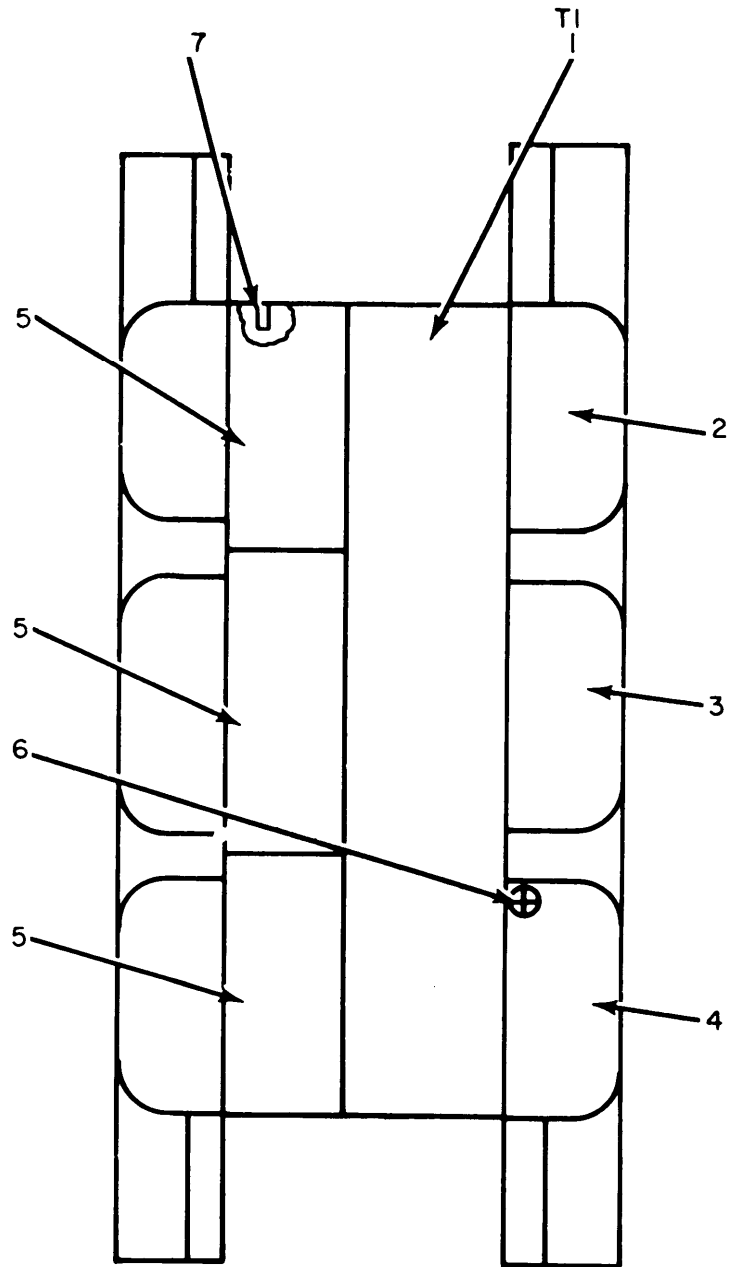


Figure 3. Power Supply PP-4606B/G, Rectifier Assembly.

SECTION II

(1)	(2)	(3)	(4)	(5)	(6)	(7)	(8)	
ILLUSTRATION								
(A)	(B)	NATIONAL			DESCRIPTION		QTY	
FIG	ITEM	SMR	STOCK	PART			INC	
NO.	NO.	CODE	NUMBER	NUMBER	FSCM	USABLE ON CODE	IN	
							UNIT	
						U/M		
3	1	XDHZZ		91211	10621	ANGLE, INSULTION	EA	2
3	2	XDHZZ		91209	10621	HEAT SINK,ELEC	EA	2
3	3	XDHZZ		1N3162R	5277	SEMICONDUCTOR,DIODE	EA	3
3	4	XDHZZ		91210	10621	BUS BAR	EA	3
3	5	PAHZZ	5961-00-934-3004	1N3162	5277	SEMICONDUCTOR,DIODE	EA	3

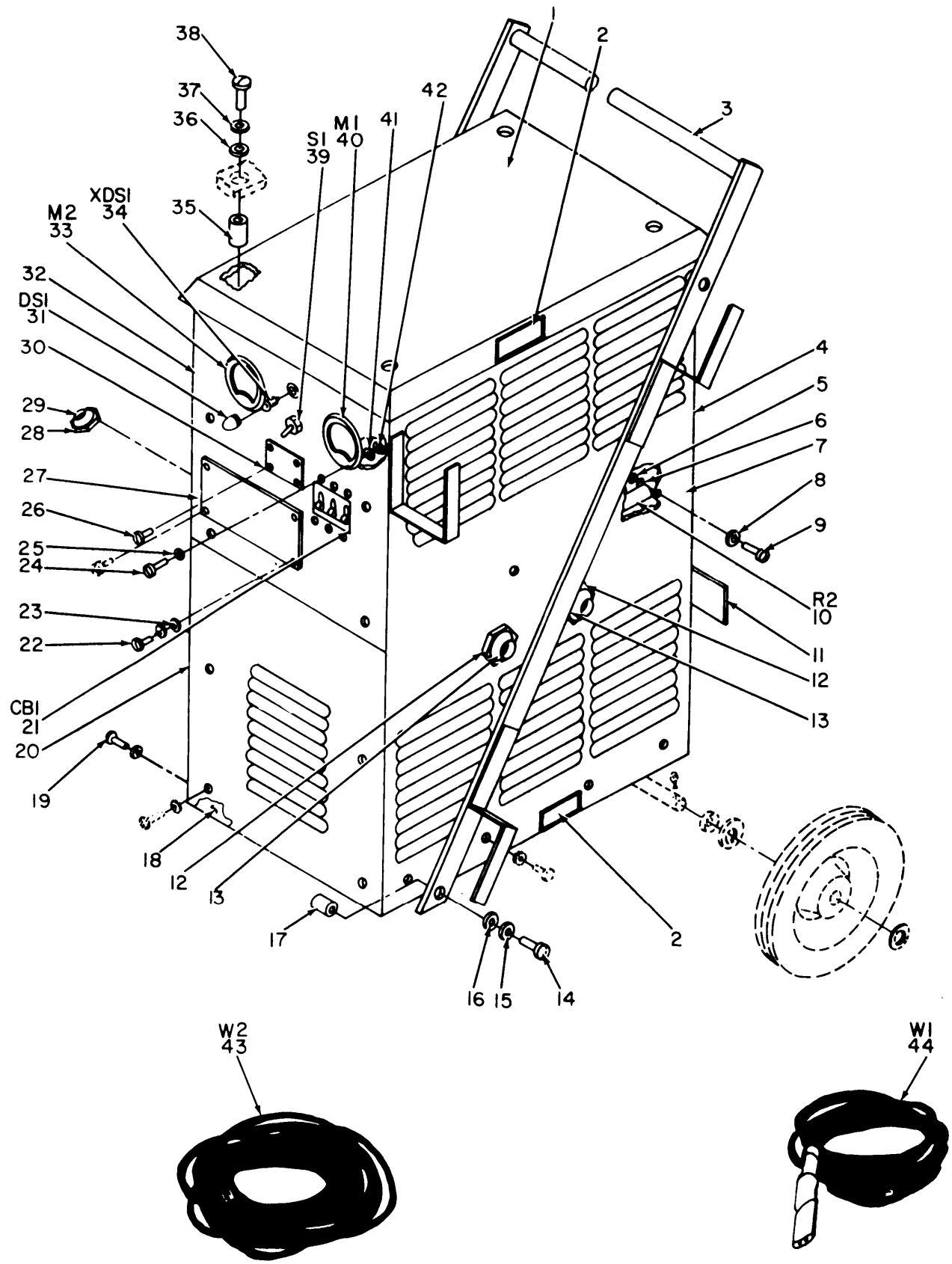


EL3ZF004

Figure 4. Power Supply PP-4606B/G, Base Assembly Transformer.

SECTION II

(1)	(2)	(3)	(4)	(5)	(6)	(7)	(8)	
ILLUSTRATION								
(A)	(B)	NATIONAL			DESCRIPTION		QTY	
FIG	ITEM	STOCK	PART	FSCM		USABLE ON CODE	INC	
NO.	NO.	NUMBER	NUMBER				IN	
							UNIT	
4	1	XDHZZ	91145-1	10621	TRANSFORMER, STPDN	EA	1	
4	2	XDHZZ	91213-1	10621	MARKER, INDENT	EA	1	
4	3	XDHZZ	91213-2	10621	MARKER, INDENT	EA	1	
4	4	XDHZZ	91213-3	10621	MARKER, INDENT	EA	1	
4	5	XDHZZ	601-12F	75382	TERMINAL BOARD	EA	3	
4	6	PAHZZ	5305-00-889-3000	MS35206-230	96906	SCREW, MACHINE	EA	12
4	7	XDHZZ	R5106	26132	TERMINAL, LUG	EA	43	



EL3ZF005

Figure 5. Power Supply PP-4606B/G, Housing Assembly.

SECTION II										
(1)	(2)	(3)	(4)	(5)	(6)	(7)	(8)			
ILLUSTRATION										
(A)	(B)	NATIONAL		DESCRIPTION				(8)		
FIG	ITEM	SMR	STOCK	PART		USABLE	ON	CODE	U/M	QTY
NO.	NO.	CODE	NUMBER	NUMBER	FSCM					INC
										IN
										UNIT
5	1	XDHZZ		91152	10621	PANEL, TOP			EA	1
5	2	XDHZZ		91193	10621	PLATE, IDENT			EA	2
5	3	XDHHH		91159	10621	HANDLE ASSEMBLY			EA	1
5	4	XDHZZ		91150-2	10621	PANEL, UPPER REAR			EA	1
5	5	PAHZZ	5310-00-934-9757	MS35649-282	96906	NUT, PLAIN, HEXAGON			EA	2
5	6	PAHZZ	5310-00-559-0070	MS35333-38	96906	WASHER, LOCK			EA	2
5	7	XDHZZ		91151-1	10621	PANEL, RIGHT SIDE			EA	
5	8	PAHZZ	5310-00-765-3197	MS27183-41	96906	WASHER, FLAT			EA	5
5	9	PAHZZ	5305-00-984-6193	MS35206-245	96906	SCREW, MACHINE			EA	2
5	10	XDHZZ		RX47V8R0	81349	RESISTOR, SDJUSTABLE			EA	1
5	11	XDHZZ		91194	10621	PLATE, INSTRUCTION			EA	1
5	12	PAHZZ	5975-00-642-7263	144	59730	LOCKNUT, CND, ELEC			EA	1
5	13	PAHZZ	5975-00-583-2960	2559	59730	BUSHING, CNDCT, ELEC			EA	2
5	14	PAHZZ	5305-00-269-3216	MS90725-66	96906	SCREW, CAP, HEX DH			EA	4
5	15	PAHZZ	5310-00-595-7237	MS35333-42	96906	WASHER, LOCK			EA	4
5	16	PAHZZ	5310-00-080-6004	MS27183-14	96906	WASHER, FLAT			EA	4
5	17	XDHZZ		91160-1	10621	SPACER, SLEEVE			EA	4
5	18	XDHZZ		91150-3	10621	PANEL, BOTTOM			EA	2
5	19	PAHZZ	5305-00-984-6191	MS35206-243	96906	SCREW, MACHINE			EA	5
5	20	XDHZZ		91151-2	10621	PANEL, LEFT SIDE			EA	1
5	21	XDHZZ		CD3240-480-9	74193	CIRCUIT BREAKER			EA	1
5	22	PAHZZ	5305-00-988-1729	MS35206-228	96906	SCREW, MACHINE			EA	6
5	23	PAHZZ	5310-00-003-9413	MS35333-44	96906	WASHER, LOCK			EA	6
5	24	XDHZZ		MILS933B6-32X5-8	81349	SCREW, MACHINE			EA	3
5	25	PAHZZ	5310-00-579-0079	MS35333-37	96906	WASHER, LOCK			EA	3
5	26	XDHZZ		AN504-4-5	88044	SCREW, TAPPING			EA	4
5	27	XDHZZ		91192	810621	PLATE, INSTRUCTION			EA	1
5	28	PAHZZ	5975-00-714-8031	143	99730	LOCKNUT, CND, ELEC			EA	1
5	29	PAHZZ	5975-00-296-6984	2545	59730	BUSHING, CNDCT, ELEC			EA	1
5	30	XDHZZ		91191	10621	PLATE, IDENT			EA	1
5	31	PAOZZ	6240-00-155-8714	313	24455	LAMP, INCNANDESCENT			EA	1
5	32	XDHZZ		91150-1	10621	PANEL, FRONT, TOP			EA	1
5	33	PAHZZ	6625-00-580-5877	MR36W040DCVVR	81349	VOSTMETER			EA	1
5	34	PAHZZ	6210-00-186-7987	MS90287-4	96906	LIGHT, INDICATOR			EA	1
5	35	XDHZZ		91160-2	10621	SPACER, SLEEVE			EA	4
5	36	PAHZZ	5310-00-209-0965	MS35333-40	96906	WASHER, LOCK			EA	4
5	37	PAHZZ	5310-00-809-4058	MS27183-10	96906	WASHER, FLAT			EA	4
5	38	PAHZZ	5305-00-988-1171	MS35206-265	96906	SCREW, MACHINE			EA	4

SECTION II

(1)	(2)	(3)	(4)	(5)	(6)	(7)	(8)
ILLUSTRATION							
(A)	(B)	NATIONAL			DESCRIPTION		QTY
FIG	ITEM	STOCK	PART			USABLE ON CODE	INC
NO.	NO.	NUMBER	NUMBER	FSCM			IN
							UNIT
5	39	PAHZZ 5930-00-655-1575	MS35059-22	96906	SWITCH, TOGGLE		EA 1
5	40	XDHZZ	MR36W300DCAAR	81349	AMMETER		EA 1
5	41	PAHZZ 5310-00-082-1404	MS27183-6	96906	WASHER, FLAT		EA 3
5	42	XDHZZ	MILS933A6-32	81349	NUT, PLAIN, HEXAGON		EA 3
5	43	XDOZZ	91158	10621	CABLE ASSEMBLY, PWR		EA 1
5	44	PAOZZ 6150-00-642-7561	AN2551D20	88044	CABLE ASSEMBLY, PWR		EA 1

SECTION IV

NATIONAL STOCK NUMBER AND PART NUMBER INDEX

NOTE: LATEST NATIONAL STOCK NUMBER AND PART NUMBER ASSIGNMENTS ARE INCLUDED AT END OF INDEX

STOCK NUMBER	FIGURE NO	ITEM NO	STOCK NUMBER	FIGURE NO	ITEM NO
5310-00-003-9413	5	23	6150-00-642-7561	5	44
5310-00-014-5850	2	21	5930-00-655-1575	5	39
5310-00-080-6004	5	16	5975-00-714-8031	5	28
5310-00-082-1404	5	41	5310-00-765-3197	5	28
6240-00-155-8714	5	31	5310-00-809-4058	2	3
6625-00-166-1005	2	5	5305-00-889-3000	4	6
6130-00-181-8794	5	24	5961-00-934-3004	3	5
6210-00-186-7987	5	36	5310-00-934-9747	2	22
5305-00-269-3216	5	14	5310-00-934-9757	2	19
5975-00-296-6984	5	29	5310-00-934-9757	5	5
			5310-00-934-9758	2	20

5310-00-559-0070	2	18	5305-00-984-4984	2	31
5310-00-559-0070	5	6	5305-00-984-6191	5	19
5310-00-576-5752	2	12	5305-00-984-6193	5	9
5310-00-579-0079	2	23	5305-00-984-6195	2	25
5310-00-579-0079	5	25	5305-00-988-1171	5	38
6625-00-580-5877	5	33	5305-00-988-1725	2	6
5975-00-583-2960	5	13	5305-00-988-1725	2	27
5310-00-595-7237	5	15	5305-00-988-1729	5	22
5975-00-642-7265	5	12	5310-00-997-1888	2	2

PART NUMBER	FSCM	FIG. NO.	ITEM NO.	PART NUMBER	FSCM	FIG. NO.	ITEM NO.
AN2551D20	88044	5	44	MS90725-66	96906	5	14
AN381-3-16	88044	2	15	MS91587-4	96906	2	5
AN504-4-5	88044	5	26	RX47V8R0	81349	5	10
CD3240-480-9	74193	5	21	R5106	24132	4	7
CE71C40CB14	81349	2	32	S01CAC6EC	5277	2	29
FCMR	99392	2	33	1N3162	5277	3	5
MILS933A6-32	81349	5	42	1N3162R	5277	3	3
MILS933B6-32X5-8	81349	5	24	143	59730	5	28
MR36W040DCVVR	81349	5	33	144	59730	5	12
MR36W300DCAAR	81349	5	40	2545	59730	5	29
MS27183-6	96906	2	30	2559	59730	5	13
MS27183-6	96906	5	41	313	24455	5	31
MS27183-10	96906	2	3	601-12F	75382	4	5
MS27183-10	96906	5	37	91145	10621	2	34
MS27183-14	96906	5	16	91145-1	10621	4	1
MS27183-24	96906	2	17	91146-1	10621	2	9
MS27183-41	96906	2	28	91146-2	10621	2	7
MS27183-41	96906	5	8	91146-3	10621	2	4
MS27183-42	96906	2	21	91147	10621	2	11
MS35059-22	96906	5	39	91148	10621	1	1
MS35206-228	96906	5	22	91149	10621	2	13
MS35206-243	96906	5	19	91150-1	10621	5	32
MS35206-245	96906	5	9	91150-2	10621	5	4
MS35206-246	96906	2	25	91150-3	10621	5	18
MS35206-281	96906	2	6	91151-1	10621	5	7
MS35206-281	96906	2	27	91151-2	10621	5	20
MS35206-285	96906	5	38	91152	10621	5	1
MS35223-27	96906	2	31	91153	10621	2	26
				91157	10621	2	24
				91158	10621	5	43
				91159	10621	5	3
MS35333-37	96906	2	23	91160-1	10621	5	17
MS35333-37	96906	5	25	91160-2	10621	5	35
MS35333-38	96906	2	18	91191	10621	5	30
MS35333-38	96906	5	6	91192	10621	5	27
MS35333-39	96906	2	12	91193	10621	5	2
MS35333-40	96906	2	1	91194	10621	5	11
MS35333-40	969006	5	36	91195	10621	2	14
MS35333-42	96906	5	15	91196	10621	2	16
MS35333-44	96906	5	23	91202	10621	1	2
MS35649-202	96906	2	20	91209	10621	3	2
MS35649-2252	96906	2	2	91210	10621	3	4
MS35649-262	696906	2	22	91211	10621	3	1
MS35649-282	96906	2	19	91213-1	10621	4	2
MS35649-282	96906	5	5	91213-2	10621	4	3
MS90287-4	96906	5	34	91213-3	10621	4	4

TM11-6130-243-24P-2
SECTION IV
NATIONAL STOCK NUMBER AND PART NUMBER INDEX

LATEST NATIONAL STOCK NUMBER ASSIGNMENTS

STOCK NUMBER	FIG. NO.	ITEM NO.
5950-00-004-7722	2	11
5950-00-040-8077	2	34
5310-00-082-1404	2	30
5310-00-209-0965	2	1
5310-00-209-0965	5	36
5305-00-269-3209	2	8
5310-00-765-3197	5	8
5310-00-809-4058	5	37
5310-00-809-8536	2	17
5305-00-988-1724	2	10

LATEST PART NUMBER ASSIGNMENTS

PART NUMBER	FSCM	FIG. NO.	ITEM NO.
MS35206-230	96906	4	6
MS35206-280	96906	2	10
MS90725	96906	2	8

By Order of the Secretary of the Army:

BERNARD W. ROGERS
General, United States Army
Chief of Staff

Official:

J.C. PENNINGTON
Brigadier General, United States Army
The Adjutant General

Distribution:

To redistributed in accordance with DA Form 12-36A, organizational maintenance requirements for All Geographical Areas.

RECOMMENDED CHANGES TO EQUIPMENT TECHNICAL MANUALS



SOMETHING WRONG WITH THIS MANUAL?

THEN... JOT DOWN THE DOPE ABOUT IT ON THIS FORM, TEAR IT OUT, FOLD IT AND DROP IT IN THE MAIL!

FROM: (YOUR UNIT'S COMPLETE ADDRESS)
 Commander
 Stateside Army Depot
 ATTN: AMSTA-US
 Stateside, N.J. 07703

DATE 10 July 1975

PUBLICATION NUMBER

TM 11-5840-340-12

DATE

23 Jan 74

TITLE

Radar Set AN/SPC-76

BE EXACT... PIN-POINT WHERE IT IS

IN THIS SPACE TELL WHAT IS WRONG AND WHAT SHOULD BE DONE ABOUT IT:

PAGE NO.	PARA-GRAPH	FIGURE NO.	TABLE NO.
----------	------------	------------	-----------

2-25	2-28		
------	------	--	--

Recommend that the installation antenna alignment procedure be changed through to specify a 2° IFF antenna lag rather than 1°.

REASON: Experience has shown that with only a 1° lag, the antenna servo system is too sensitive to wind gusting in excess of 27 knots, and has a tendency to rapidly accelerate and decelerate as it hunts, causing strain to the drive train. Hunting is minimized by adjusting the lag to 2° without degradation of operation.

3-10	3-3		
------	-----	--	--

			3-1
--	--	--	-----

Item 5, Function column. Change "2 db" to "3db."

REASON: The adjustment procedure for the TRANS POWER FAULT indicator calls for a 3 db (500 watts) adjustment to light the TRANS POWER FAULT indicator.

5-6	5-8		
-----	-----	--	--

			FO3
--	--	--	-----

Add new step f.1 to read, "Replace cover plate removed in step e.1, above."

REASON: To replace the cover plate.

Zone C 3. On J1-2, change "+24 VDC to "+5 VDC."

REASON: This is the output line of the 5 VDC power supply. + 24 VDC is the input voltage.

TYPED NAME, GRADE OR TITLE, AND TELEPHONE NUMBER

SSG I. M. DeSpirito 999-1776

SIGN HERE:

SSG I. M. DeSpirito

DA FORM 2028-2 (TEST)

P.S.--IF YOUR OUTFIT WANTS TO KNOW ABOUT YOUR MANUAL "FIND," MAKE A CARBON COPY OF THIS AND GIVE IT TO YOUR HEADQUARTERS.

HISA 1686-75

TEAR ALONG DOTTED LINE

RECOMMENDED CHANGES TO EQUIPMENT TECHNICAL MANUALS



SOMETHING WRONG WITH THIS MANUAL?

THEN... JOT DOWN THE DOPE ABOUT IT ON THIS FORM, TEAR IT OUT, FOLD IT AND DROP IT IN THE MAIL!

FROM: (YOUR UNIT'S COMPLETE ADDRESS)

DATE

PUBLICATION NUMBER

DATE

TITLE

TM 11-6130-243-24P-2 12 Dec 77

BE EXACT... PIN-POINT WHERE IT IS

IN THIS SPACE TELL WHAT IS WRONG AND WHAT SHOULD BE DONE ABOUT IT:

PAGE NO.	PARA-GRAPH	FIGURE NO.	TABLE NO.
----------	------------	------------	-----------

TEAR ALONG DOTTED LINE

TYPED NAME, GRADE OR TITLE, AND TELEPHONE NUMBER

SIGN HERE:

DA FORM 2028-2 (TEST) 1 AUG 74

P.S.--IF YOUR OUTFIT WANTS TO KNOW ABOUT YOUR MANUAL "FIND," MAKE A CARBON COPY OF THIS AND GIVE IT TO YOUR HEADQUARTERS.

FILL IN YOUR
UNIT'S ADDRESS

FOLD BACK

DEPARTMENT OF THE ARMY

OFFICIAL BUSINESS

Commander
US Army Electronics Command
ATTN: DRSEL-MA-Q
Fort Monmouth, New Jersey 07703

FOLD BACK

TEAR ALONG DOTTED LINE

REVERSE OF DA FORM 2026-2 (TEST)

PIN :030430-000